

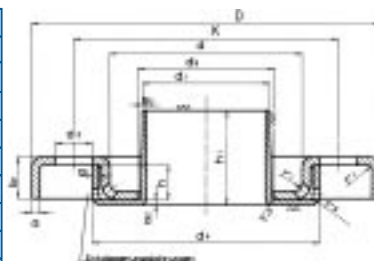


Kauluslaippa pyörivällä laipparenkaalla PN 16
Welding neck flange with swivel flange PN 16
Irtolaippa PN 10 / Loose flange PN 10
Umpilaippa PN 10 / Blind flange PN 10

Kauluslaippa pyörivällä laipparenkaalla PN 16 (asennusmitat DIN 2633 mukaiset)
Welding neck flange with swivel flange PN 16 (mounting dimensions acc. to DIN 2633)

Koodi Code	DN	laipparengas swivel flange ring							kpl pcs	koko size	kaulusosa collar						
		d1	D	K	d	d5	a	b1			d2	d4	a1	a2	h1	s1	kg
10525552	15	21,3	95	65	38	25	3	11.5	4	M12	13.5	51.5	3.0	2.5	35	1.6	0.30
10525553	20	26,9	105	75	48	30	3	14.0	4	M12	13.5	61.5	3.0	2.5	38	1.6	0.40
10525554	25	33,7	115	85	53	38	3	16.0	4	M12	13.5	71.0	3.0	2.5	38	2.0	0.50
10525555	32	42,4	140	100	68	46	3	16.5	4	M16	17.5	82.5	3.0	2.5	40	2.0	0.70
10525556	40	48,3	150	110	77	54	4	18.0	4	M16	17.5	92.5	3.0	2.5	42	2.0	0.93
10525557	50	60,3	165	125	91	65	4	20.0	4	M16	17.5	107.5	3.5	2.5	45	2.0	1.30
10525558	65	76,1	185	145	108	81	5	22.0	4	M16	17.5	127.5	4.0	3.0	45	2.3	1.80
10525559	80	88,9	200	160	123	94	5	23.0	8	M16	17.5	142.5	3.5	3.0	50	2.3	2.00
10525560	100	114,3	220	180	141	119	6	24.0	8	M16	17.5	162.5	4.0	3.0	52	2.6	2.95
10525561	125	139,7	250	210	168	145	6	25.5	8	M16	17.5	192.0	4.0	3.5	55	2.6	3.50
10525562	150	168,3	285	240	192	173	6	27.0	8	M20	21.5	218.0	4.0	3.5	55	2.6	4.20
10525563	200	219,1	340	295	245	225	8	31.0	12	M20	21.5	273.0	5.0	4.5	62	2.9	7.35

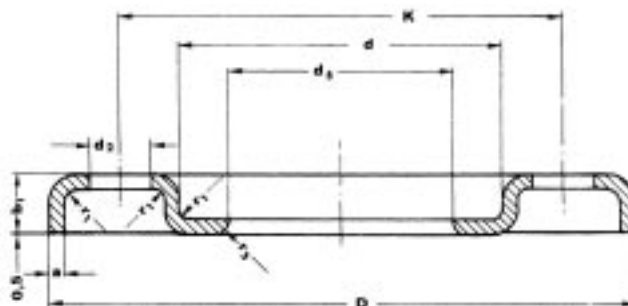
Materiaali: Kaulusosa Collar AISI 316 L
Material: Pyörivä laipparengas Flange ring AISI 304



Irtolaippa PN 10 (asennusmitat DIN 2642 mukaiset)
Loose flange PN 10 (mounting dimensions acc. to DIN 2642)

Koodi Code	DN	laippa flange						kpl pcs	koko size	d2	kg
		d1	D	d	d5	K	a				
10544551	10	17,2	90	33	19	60	3	4	M12	13.5	0.16
10544552	15	21,3	95	38	24	65	3	4	M12	13.5	0.20
10544553	20	26,9	105	48	30	75	3	4	M12	13.5	0.25
10544554	25	33,7	115	53	38	85	3	4	M12	13.5	0.30
10544555	32	42,4	140	68	46	100	3	4	M16	17.5	0.45
10544556	40	48,3	150	77	54	110	4	4	M16	17.5	0.62
10544557	50	60,3	165	91	65	125	4	4	M16	17.5	0.90
10544558	65	76,1	185	108	81	145	5	4	M16	17.5	1.20
10544559	80	88,9	200	123	94	160	5	8	M16	17.5	1.30
10544560	100	114,3	220	141	119	180	6	8	M16	17.5	1.75
10544561	125	139,7	250	168	145	210	6	8	M16	17.5	2.20
10544562	150	168,3	285	192	173	240	6	8	M20	21.5	2.70
10544563	200	219,1	340	245	225	295	8	8	M20	21.5	4.60
10544564	250	273	395	295	276	350	8	12	M20	21.5	6.10
10544565	300	323,9	445	345	329	400	8	12	M20	21.5	7.70

Materiaali / Material: AISI 304



Umpilaippa PN 10 (asennusmitat DIN 2527 mukaiset)
Blind flange PN 10 (mounting dimensions acc. to DIN 2527)

Koodi Code	DN	laippa flange				kpl pcs	koko size	d2	b	a	kg
		d1	D	d	K						
10504552	15	21,3	95	38	65	4	M12	13.5	11.5	4.0	0.27
10504553	20	26,9	105	48	75	4	M12	13.5	14.0	4.0	0.34
10504554	25	33,7	115	53	85	4	M12	13.5	16.0	4.0	0.46
10504555	32	42,4	140	68	100	4	M16	17.5	16.5	5.0	0.76
10504556	40	48,3	150	77	110	4	M16	17.5	17.5	5.0	0.85
10504557	50	60,3	165	91	125	4	M16	17.5	19.5	6.0	1.30
10504558	65	76,1	185	108	145	4	M16	17.5	21.0	6.0	1.70
10504559	80	88,9	200	123	160	8	M16	17.5	22.0	6.0	2.00
10504560	100	114,3	220	141	180	8	M16	17.5	23.0	6.0	2.50
10504561	125	139,7	250	168	210	8	M16	17.5	25.0	6.0	3.40
10504562	150	168,3	285	192	240	8	M20	21.5	27.5	6.0	4.15
10504563	200	219,1	340	245	295	8	M20	21.5	31.0	8.0	7.55

Materiaali / Material: AISI 316 L

Ainestodistukset: EN 10204 / 3.1 B, DIN 17440, AD-W2, W9
Certificates: ISO 9002 / EN 29002, PED 97/23/EG

