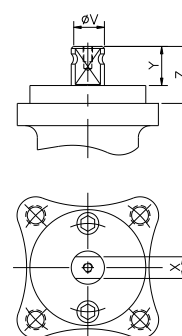
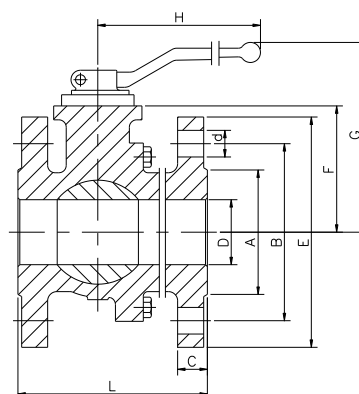
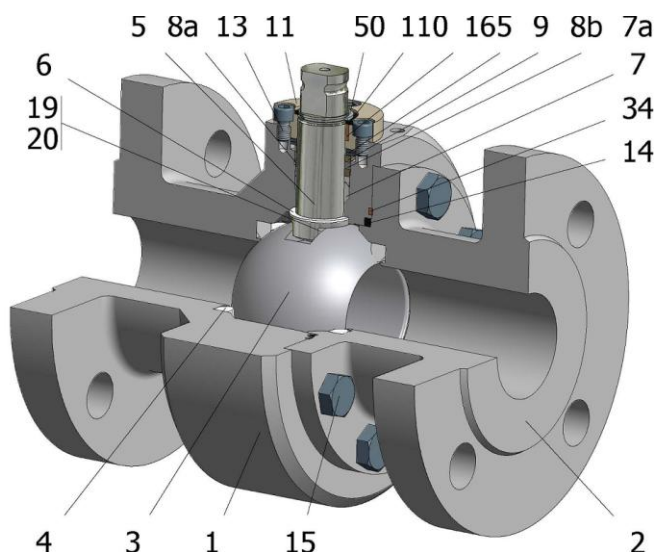


FIG.Z 26 TTTG PN63 DN15-65 F1



Position	Description	Material
01	Body 1	S.S. 1.4401
02	Body 2	S.S. 1.4401
03	Ball	S.S. 1.4408
04	Seat	PTFE (modified)
05	Stem	S.S. 1.4401
06	Stem seal	PTFE (modified)+FG
07	Stem packing	PTFE (modified)
07a	Stem packing 2	Graphite
08a	Gland packing 1	S.S. 1.4401
08a	Gland packing 2	S.S. 1.4401
09	Spring washer	S.S. 1.4310
11	Cover	S.S. 1.4408
13	Cover bolt	A4-70
14	Body seal 1	PTFE (modified)
15	Body bolt	A4-70
16	Handle	WCB
17	Handle bolt	1.045(8.8)
19	Spring	S.S. 1.4401
20	Antistatic ball	S.S. 1.4401
34	Body seal 2	Graphite
50	Subjection ring	S.S. 1.4021
110	Subjection ring seal	S.S. 1.4401 Nitrided
165	Stem bearing	PTFE (modified)+FG

General features

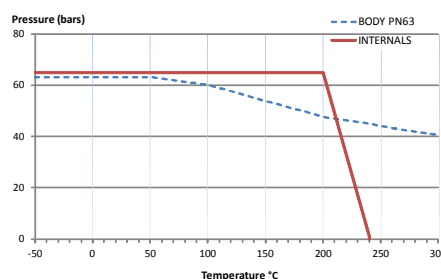
Floating ball.
Split body.
Full bore.
Soft seat.
Bidirectional.
Anti Blow out proof stem.
Autoadjustable packing.
Anti static device.
Self-cavity pressure relief.

Standards

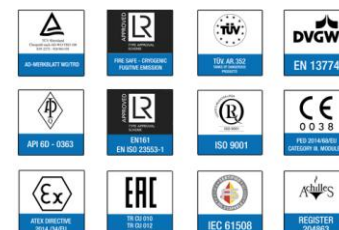
Top flange ISO 5211
Flanges EN 1092-01
Face to face EN 558
Testing EN-12266, ISO 5208
Design EN-12516, ISO 17292

Official approvals

CERTIFICATE FIRE SAFE
TA-LUFT VDI 2440
ISO 15848-1
ATEX 2014/34/EU
PED 2014/68/EU
SIL 3 CAPABLE

**PEKOS GROUP CERTIFICATES:**

ISO 9001: 2015 / 2014/68/EU / API-6D

**DIMENSIONS & Technical information**

DN	PN	D	L	E	A	B	C	F	H	G	V	X	Y	Z	n x d	ISO 5211	Torque	MAST	Weight
15	63	15	130	105	45	75	20	52	185	100	14	11	11	13,5	4 x 14	F05	15	44	7
20	63	20	150	130	57	90	22	54	185	102	14	11	11	13,5	4 x 18	F05	17	44	9
25	63	25	160	140	68	100	24	60	185	110	18	14	17	19,5	4 x 18	F05	28	95	11
32	63	32	180	155	77	110	24	65	185	115	18	14	17	19,5	4 x 22	F05	43	95	15
40	63	40	200	170	88	125	26	75	293	129	22	17	20	30	4 x 22	F07	65	250	19
50	63	50	230	180	102	135	26	83	293	137	22	17	20	30	4 x 22	F07	92	250	25
65	63	65	290	205	122	150	26	96	293	150	22	17	20	30	8 x 22	F07	116	250	39

** Depending on service conditions.

* Dimensions are in mm.

* Torque & MAST are in Nm.

* Weight is in Kilograms

* Torque values have been measured ΔP at maximum rating at room temperature