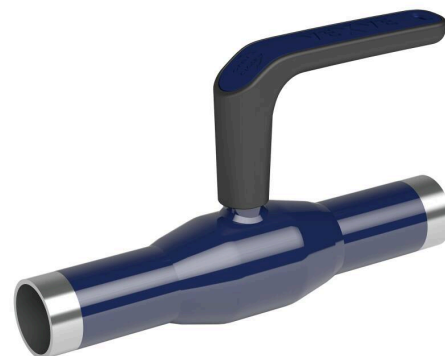


# X-steel ball valves, reduced bore

100X series, X-series, welding / welding, EN (DIN), DN 10-50, reduced bore

Body	DN 10-50 Steel, P235GH (1.0345)
Ball	DN 10-50 Stainless steel, X5CrNi18-10 (1.4301)
Ball seal	DN 10-50 PTFE+C
Stem	DN 10-50 Stainless steel, X8CrNiS18-9 (1.4305)
Stem seal	DN 10-50 FPM
Operation	DN 10-50 with composite handle



## Operation conditions

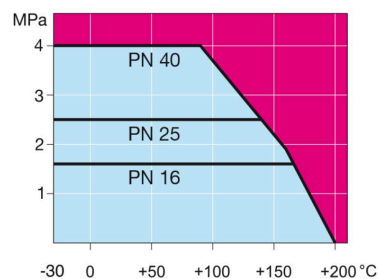
-20 ° – +200 °C

Below -20 °C contact manufacturer

Over +200 °C contact manufacturer

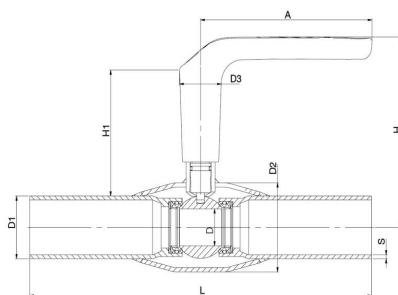
Lowest allowed ambient temperature -40 °C

Leakage rate A (EN 12266-1)



Not for steam

DN 10-50



DN	PN	Product no.	A	D	D1	D2	D3	H	H1	L	S	kg
10	40	100010X	130	10	17.2	33.7	32.0	119	86	230	2	0.6
15	40	100015X	130	10	21.3	33.7	32.0	119	86	230	2	0.6
20	40	100020X	130	15	26.9	42.4	32.0	123	87	230	2.3	0.9
25	40	100025X	130	20	33.7	48.3	32.0	125	86	230	2.6	0.9
32	40	100032X	130	25	42.4	60.3	32.0	129	85	260	2.6	1.4
40	40	100040X	130	32	48.3	70.0	32.0	133	87	260	2.6	1.5
50	40	100050X	130	40	60.3	76.1	32.0	140	88	300	2.9	2.1